

GETTING STARTED

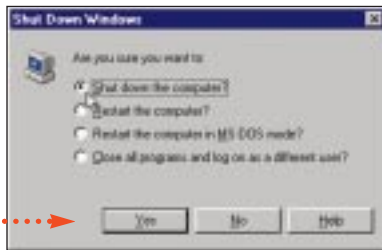
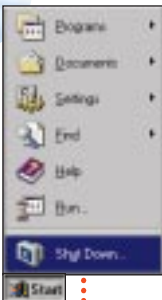
1

Insert CD, then choose Install NI-488.2 Software for Windows.



2

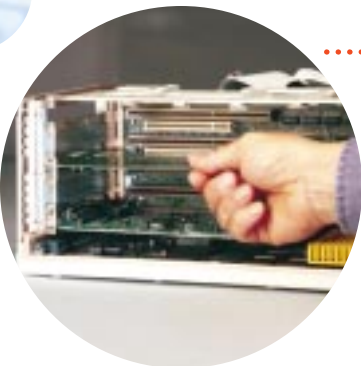
Shut down, then power off computer.



Power Off
Computer

3

Install hardware*, then power on computer.



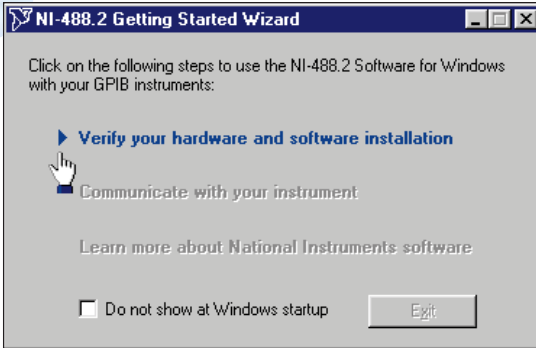
Power On
Computer

* For Help installing your hardware, refer to the GPIB Hardware Guide (available on the CD through View Documentation).

(Continued)

4

Run NI-488.2 Getting Started Wizard.



www.natinst.com/support/
support@natinst.com

Tel: (512) 795-8248 • Fax: (512) 683-5678
Fax-on demand: (512) 418-1111 • [ftp.natinst.com](ftp://ftp.natinst.com)



020899

322271A-01